



America

CERTIFICATE

No. B 16 06 58611 008

Holder of Certificate: Kuoyuh W.L. Enterprise Co. Ltd.

No. 17, Kejia 6th Rd.,
Yunlin County
64057 Douliu City,
TAIWAN

**Production
Facility(ies):**

58611, 85192

Certification Mark:



Product:

Circuit Breaker for Equipment
Supplementary Protectors

Model(s):

88 R-type; 88 J-type
98 R-type; 98 J-type
91 R-type; 91L R-type
(see certificate attachment for model differences.)

Parameters:

Rated Input Voltage:	125/250 V AC (model 88,91,98 series) 125 V AC (only Model 91L) 32 V DC (Model 88, 98 series) 50 V DC (Model 91, 91L)
Rated Frequency:	50/60 Hz
Rated Input Current:	3-20 A (Model 88 series) 3-30 A (Model 98 series) 1-10 A (Model 91) 5-20 A (Model 91L)
Protection Class:	I
Degree of Protection:	IPX0

Tested according to: EN 60934/A2:2013

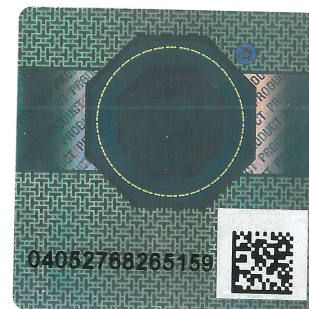
The product was tested on a voluntary basis and complies with the essential requirements. The certification mark shown above can be affixed on the product. It is not permitted to alter the certification mark in any way. In addition the certification holder must not transfer the certificate to third parties. See also notes overleaf.

Test report no.: 72109154-000

Valid until: 2021-06-23

Date, 2016-06-29

Page 1 of 2



Attachment to Certificate B 16 06 58611 008

Kuoyuh W. L. Enterprise Co. Ltd
No. 17, Kejia 6th Road
Yunlin County, 64057 Douliu City, Taiwan



America

Description of Model:

- (1) 98 Series and 88 Series are both single pole type. The structure and the performance are exactly the same. Mode of tripping is thermal tripping by bimetal strip. Method of operation are R-type and J-type.
- (2) The difference between 98 Series and 88 Series is that :98 Series product is a bit larger than 88 Series product in shape,88 Series is an improved type based on 98 Series.
- (3) The difference in the structure between R-type and J-type is that : R-type manual reset putting increased; J-type did not putt, automatic reset, the corresponding products of our company is theAR Series

Explanation of model/ type reference

R-type
X X Series-----①
|
X----- ②

- ① The serial-number, 98 Series,88 Series
- ② The rated operation current

J-type
X X AR-----①
|
X----- ②

- ① The serial-number, 98 AR ,88 AR
- ② The rated operation current

Rating Information:

Model 88 R-type: 125/250VAC, 50/60Hz, 32VDC, 3~20A
Model 98 R-type: 125/250VAC, 50/60Hz, 32VDC, 3~30A
Model 88 J-type: 125/250VAC, 50/60Hz, 32VDC, 3~20A
Model 98 J-type: 125/250VAC, 50/60Hz, 32VDC, 3~30A
Model 91 R-type: 125/250VAC, 50/60Hz, 50VDC, 1.0~10.0A
Model 91L R-type: 125VAC, 50/60Hz, 50Vdc, 5.0~20A

Test Report No: 72109154-000

Date, 2016-06-29
B 16 06 58611 008

Page 2 of 2

